



Please send submissions to Jeff Mason, masonje6@msu.edu

Don't forget to follow us on Twitter @MSU_BMB

Seminar Calendar

MONDAY, APRIL 12

[Plant Resilience Institute Seminar](#)

Rusty Rodriguez, CEO - Adaptive Symbiotic Technologies
“Programming Plants for Climate Resilience with Symbiotic Fungal Endophytes: Altering the Future of Agricultural Sustainability, Food Security and Poverty”

1:00

Email Robin Buell (buell@msu.edu) for the Zoom link

[Molecular Plant Science Seminars](#)

Krishna Niyogi, University of California, Berkeley
“Molecular mechanisms of phytoplankton photosynthesis and carbon sequestration”

4:00 PM

[Zoom link](#) (Passcode: 941910)

TUESDAY, APRIL 13

The Exchange – (Science discussion for BMB graduate students)
“Journal Club on Dr. Nicholas Kanaan, MSU”

8:00 AM

Email David (arnosti@msu.edu) for the Zoom link and password

[PRL Tuesday Noon Seminars](#)

Binod Basyal, MSU (Walker Lab) – “Role of mycorrhizal fungi in plant's drought resilience”

Noon

[Zoom link](#) (passcode 941910)

WEDNESDAY, APRIL 14

Metabolism, Membranes and Metalloenzymology Interest Group

Dan Raba (Kerfeld lab)

“Characterization of *A. thaliana* Carbonic Anhydrases and the Study of BMC-based Nanotubes”

4:00 PM

Email Teri (compeaut@msu.edu) for the Zoom link

THURSDAY, APRIL 15

[BMB Seminar Series](#)

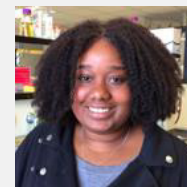
Nicholas Kanaan, MSU

“Tau Biology and Pathobiology: How Tau Antibodies Have Helped Shape the Field”

11:00 AM

Email Ashley (clarkas@msu.edu) for the Zoom link

Noteworthy News



Join me in congratulating Jenn Watts, a 5th year Physiology PhD student in the Ralston Lab, who was awarded the Jack R. Hoffert Memorial Endowment Award by the Department of Physiology and the National Edward A. Bouchet Honor Society Award.

Jenn's research interest is understanding the viral origins of birth defects using animal and stem cell models.

Jenn is also actively involved in the Summer Research Opportunities Program (SROP) at MSU and has mentored 47 students during 2017, 2019, and 2020 from disciplines in the Social/Behavior Sciences (SBS) and STEM. Additionally, Jennifer participates in the MSU Girls' Math and Science Day hosted by the Graduate Women in Science organization.

SPARTANS WILL.

[EEB Seminar Series](#)

Dan MacNulty, Wildland Resources Utah State University
“Deciphering the trophic effects of large carnivores in wildland food webs”
3:30 PM
Email Barbara (ceb@msu.edu) for the Zoom link

FRIDAY, APRIL 16

[Science at the Edge](#)

Jason Moore, University of Pennsylvania
“Accessible Artificial Intelligence for Data Science”
11:30 AM
Email Alex Dickson (alexrd@egr.msu.edu) for the Zoom link

[Plant Biology Seminar Series](#)

Ruthie Angelovici, University of Missouri
3:30 PM
Email Chasidy (perezch2@msu.edu) for the Zoom link

Announcements

Don't forget to follow us on Twitter @ MSU_BMB

Professor Yu Zhang's lab at Western Michigan University is hiring postdoctoral researchers. The focus of the Zhang lab is to identify mechanisms that promote antibody diversification and suppress associated oncogenic lesions in B lymphocytes. Projects will employ cell line and mouse models with a variety of state of art approaches, including CRIPSR/Cas9 mediated genome manipulation and various next generation sequencing techniques. PhD degree in Molecular Biology, Genetics, Immunology or related biological science fields required. Click [here](#) for more information.

MSU has been approved to provide the one-dose J&J vaccine to students. All grad and UG students can take advantage of this opportunity by registering to be vaccinated at the link [here](#).

The University of Michigan is hosting an NCBI Midwest Codeathon July 13-15. Project topics will be proposed by participants and should involve computational or data analysis projects within life science domains. Participant applications will be open in about a month, which are encouraged from scientists at all stages. Questions should be directed to (codeathons@ncbi.nlm.nih.gov).

Starting April 26th, join the [Postdoc Academy](#) for a flexible 6-week course, “[Succeeding as a Postdoc](#)”, that guides postdocs through building foundational professional development skills around career planning, resilience, and more. With nearly 5,000 participants in the prior course offerings, the Postdoc Academy invites you to connect with postdocs from around the world.

The MSU Herbarium has an on-campus position available for an undergraduate student intern starting no later than May 10th. The person hired to fill this position will assist with lichen and moss specimen digitization, curatorial work, and research projects in the Herbarium, with the potential to pursue research and/or outreach projects if interest and aptitude are demonstrated. For more information about the Herbarium, please visit the [website](#). If you're interested in the position, please apply [here](#).

Recent Publications

Raicu A-M, Bird KM, Arnosti DN. "Tête-à-tête with CtBP dimers." *Structure*. Volume 29. April 2021.

Pizzo L, Lasser M, Yusuff T, Jensen M, Ingraham P, Huber E, Singh MD, Monahan C, Iyer J, Desai I, Karthikeyan S, Gould DJ, Yennawar S, Weiner AT, Pounraja VK, Krishnan A, Rolls MM, Lowery LA, Girirajan S. "Functional assessment of the "two-hit" model for neurodevelopmental defects in *Drosophila* and *X. laevis*." *PLoS Genet*. Apr 2021.

Donyapour N, Hirn M, Dickson A. "ClassicalGSG: Prediction of log P using classical molecular force fields and geometric scattering for graphs." *J Comput Chem*. Volume 42. Mar 2021.

Santiago JP, Soltani A, Bresson MM, Preiser AL, Lowry DB, Sharkey TD. "Contrasting anther glucose 6-phosphate dehydrogenase activities between two bean varieties suggest an important role in reproductive heat tolerance." *Plant Cell Environ*. March 2021.

Espinoza-Corral R, Schwenkert S, Lundquist PK. "Molecular changes of *Arabidopsis thaliana* plastoglobules facilitate thylakoid membrane remodeling under high light stress." *Plant J*. Volume 105. March 2021.