



## Announcements

BMB grad students, don't miss Tuesday's **student "pizza talks."** This week's presenters will be Phong H.T. Nguyễn from the Hsu lab and MacKenzie Jacobs from the Edger lab. Breakout rooms are working again, so you will have an opportunity to say hello to some of the new students joining for the first time, or catch up with old friends. Email Jessica ([jesslaw@msu.edu](mailto:jesslaw@msu.edu)) for the Zoom info.

MSU's Women's Health Interest group is selling 1 inch pins so you can **display your pronouns**. The pins are made of high quality enamel with a silver rim. Order and more information [here](#). A portion of the proceeds are going to organization in need in the East Lansing and Grand Rapids areas.

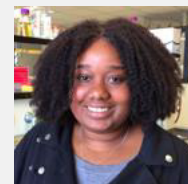
If you'd like some help **updating your resume and cover letter**, attend a free virtual workshop from 3-4pm July 27th. Register and learn more [here](#).

Don't miss the **graduate student Welcome and Resource Fair** - a hybrid online and in-person orientation for new and returning students - Saturday August 28th from 9 am - 4pm. This year's event features 25+ on and off-campus groups and organizations hosting Zoom meetings and in-person socially distanced afternoon of fun, games, music and more. Learn more [here](#).

Graduate Students interested in learning more about course design, including **turning your research topic into a course** should join CIRTL July 29th from 3-4pm to hear a panel of grad students and postdocs share their own experiences building a course based on their fields of research. In this online panel, past participants in CIRTL's course "Transforming Your Research Into Teaching" (TYRIT) will share the courses they developed as TYRIT participants, reflect on what their course design process was like and how TYRIT influenced their work, and discuss how they've been able to - or will be able to - put their designs into practice. Learn more [here](#).

After a year and a half closure due to the COVID-19 outbreak, the **MSU Museum will reopen** on Tuesday, Sept. 7. Once open, the museum will welcome visitors from 10 a.m. - 5 p.m., Tuesday – Saturday, with closures on Sunday and Monday. Free, timed-entry tickets are required, and can be reserved online beginning in September. Learn more [here](#).

## Noteworthy News



Join me in congratulating Jenn Watts, a 5th year Physiology PhD student in the Ralston Lab, who was awarded the Outstanding Doctoral Student Mentor Award. She is a valuable colleague and leader to students, peers, faculty and others, and her contributions are wide and deep.

Jenn has served as a leader and mentor to other students she meets in the Alliances for Graduate Education and the Professoriate (AGEP) community, to the students she serves in the classroom as a TA, to the students and peers she works alongside in the lab. Her impact is local and international, ranging from MSU's Undergraduate Mentoring Committee and Girls Math and Science Day to scholarly and research contributions in high-impact journals.

With these examples, Jenn demonstrates how to model STEM success in scholarship, teaching, service and mentorship.

**SPARTANS WILL.**

MSU's Institute for Cyber-Enabled Research and MSU IT Services are accepting applications from MSU doctoral students and postdoctoral researchers to join the third cohort of **MSU Cloud Computing Fellows**. We particularly encourage applicants from areas that do not typically use computing in their research. Find out more and apply [here](#).

Job / internship postings:

Kalamazoo College invites applications for a one-year appointment as a **Visiting Assistant Professor** to teach general chemistry and biochemistry starting September 2021. Learn more [here](#).

Applications are currently being accepted for the Spring 2022 term of **two undergraduate internship programs offered by the DOE** Office of Science: the Science Undergraduate Laboratory Internships (SULI) program and the Community College Internships (CCI) program. Through SULI and CCI, undergraduate students discover science and technology careers at the DOE National Laboratories and gain the experience needed to transition from intern to employment. Interns work directly with National Laboratory scientists and engineers, assisting them on research or technology projects that support the DOE mission. Learn more [here](#).

The University of Notre Dame Biology Department has two immediate job openings for a **Research Assistant Professor and a Research Technician** located in the Boler-Parseghian Center for Rare and Neglected Diseases. The Research Assistant Professor position responsibilities include leading molecular, genetics and behavioral research in mouse models as well as cell culture studies. The Research Technician responsibilities include overall lab administration and lab research support. Questions should be addressed to Sara ([slamber3@nd.edu](mailto:slamber3@nd.edu)).

The University of Missouri and the Sumner Metabolomics Research lab seek a **Postbaccalaureate or Postdoctoral Research Fellow with experience in NMR** analyses of plant natural products. The ideal candidate will have substantial hands-on, operational knowledge of NMR technologies, the ability to independently shim/tune/acquire 1D/2D NMR data, and the ability to elucidate structures of natural products using both 1D/2D NMR spectra and mass spectrometry. The successful candidate will have a minimum of a B.Sc. or a preferred M.Sc. or PhD in a related science (Chemistry, biochemistry, plant science, biology) and 3 years of postbaccalaureate hands-on experience with NMR. Questions should be addressed to Lloyd ([sumnerlw@missouri.edu](mailto:sumnerlw@missouri.edu)).

## Recent Publications

---

Martinez BL, Kararo AT, Parent KN, Underwood SM, Matz RL. "Creating and testing an activity with interdisciplinary connections: Entropy to osmosis." *Chemistry Education Research and Practice*. July 2021.

Gregory LM, McClain AM, Kramer DM, Pardo JD, Smith KE, Tessmer OL, Walker BJ, Ziccardi LG, Sharkey TD. "The triose phosphate utilization limitation of photosynthetic rate: out of global models but important for leaf models." *Plant Cell Environ*. July 2021.

Broadwater D, Medeiros HCD, Lunt RR, Lunt SY. "Current Advances in Photoactive Agents for Cancer Imaging and Therapy." *Annu Rev Biomed Eng*. July 2021.

Ostrowska N, Feig M, Trylska J. "Crowding affects structural dynamics and contributes to membrane association of the NS3/4A complex." *Biophys J*. July 2021.

Kailasam S, Peiter E. "A path toward concurrent biofortification and cadmium mitigation in plant-based foods." *New Phytologist*. June 2021.