



Please send submissions to Steve Lundback, lundback@msu.edu, 212 Biochemistry (Mailbox on 2nd Floor)

Announcements

[Thesis and Dissertation Help Sessions](#)

The Graduate School will be offering thesis and dissertation walk-in formatting help session on August 7 in room 220, Chittenden Hall.

[Graduate and Professional Student Fall Welcome Cookout](#)

The Council of Graduate Students and Graduate Student Life and Wellness host the Cookout as a way to introduce new students to Michigan State University and allow returning students to engage in positive, fun, and enriching outdoor activities to celebrate the beginning of the academic year. This coincides with the Graduate Resource Fair on August 25.

[Professional Grant Writing Workshop](#)

September 12-13, 8:30 AM – 4:30 PM, Room 61 Kellogg Conference Center. Registration required.

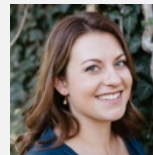
[2018 Women in Science Conference](#)

This three-day event will be hosted by the Association for Women in Science, Notre Dame Chapter (AWIS-ND) and will be held during October 5-7. The Conference is designed to provide graduate student women in science, technology, engineering, and mathematics a venue for networking and professional development.

[Postdoctoral Position, Rutgers University](#)

Dr. Shishir Chundawat has an open position for someone with expertise in one or more of the following areas: synthetic biology, molecular/plant biology, protein biophysics, structural biology, protein engineering, carbohydrate-active enzymes, chemistry, and/or chemical/biochemical engineering.

Noteworthy News



Congratulations to BMB graduate student Emily Frankman, who successfully defended her Ph.D. thesis work on August 2nd!

Emily carried out her Ph.D. research as a member of Curtis Wilkerson's laboratory, where her research focused on understanding grass cell wall biosynthesis, specifically the diferulate cross-linking between cell wall components. Her graduate work led to the development of enzyme assays to characterize BAHD acyltransferases for CoA-substrate preferences, along with the discovery of a grass-specific BAHD acyltransferase responsible for adding ferulate on phenylamines. Emily will continue her scientific training in cell wall synthesis and polarized secretion in Arabidopsis as a Postdoctoral Researcher in Erik Nielsen's laboratory at the University of Michigan.

www.linkedin.com/in/thatfrankman

SPARTANS WILL.

BMB Window Replacement Project Weekly Schedule

Monday (8/6) 301b, 301
Tuesday (8/7) 223a, 223
Wednesday (8/8) 223b, 215a, 215b, 215
Thursday (8/9) 215, 209b
Friday (8/10) 209, 209a, 201b

Monday (8/13) 201d, 201
Tuesday (8/14) 301a, 201a

During the time of the window replacement, no one is allowed in the lab at any time per EHS. Labs need to clear all windowsills, move chairs out of the way, cover all experiments, and close any open chemicals. Lab personnel will be able to return after the windows are installed, however there will be patching and painting to follow window replacement.

Contact [Nichole Daly](#) for more details.

Recent Publications

For most publications from BMB labs during the past year, see [Recent Publications](#) on the BMB website.

Mejia-Guerra MK, Li W, Doseff AI, **Grotewold E**. “Genome-Wide TSS Identification in Maize.” *Methods Mol Biol.* (2018) Jul 25;1830:239-256. doi: [10.1007/978-1-4939-8657-6_14](https://doi.org/10.1007/978-1-4939-8657-6_14)

Basson MD, Wang Q, Chaturvedi LS, More S, Vomhof-DeKrey EE, Al-Marsoum S, Sun K, **Kuhn LA**, Kovalenko P, Kiupel M. “Schlafen 12 Interaction with SerpinB12 and Deubiquitylases Drives Human Enterocyte Differentiation.” *Cell Physiol Biochem.* (2018) Jul 25;48(3):1274-1290. doi: [10.1159/000492019](https://doi.org/10.1159/000492019)

Hagen A, Sutter M, Sloan N, **Kerfeld CA**. “Programmed loading and rapid purification of engineered bacterial microcompartment shells.” *Nat Commun.* (2018) Jul 23;9(1):2881. doi: [10.1038/s41467-018-05162-z](https://doi.org/10.1038/s41467-018-05162-z)

Song G, **Hsu PY**, Walley JW. “Assessment and refinement of sample preparation methods for deep and quantitative plant proteome profiling.” *Proteomics.* (2018) Jul 23;e1800220. doi: [10.1002/pmic.201800220](https://doi.org/10.1002/pmic.201800220)