



Please send submissions to Steve Lundback, lundback@msu.edu, 212 Biochemistry (Mailbox on 2nd Floor)

Announcements

Checkout the [Grad/Postdoc News](#) page on the BMB website for the latest events and opportunities.

[Fascination of Plants Day](#)

Michigan State University hosts the third annual Fascination of Plants Day @ MSU. This year, plant sciences meet the arts in a collaboration between MSU plant scientists, the Eli and Edythe Broad Art Museum at Michigan State University (MSU Broad), and the East Lansing Art Festival. May 18, 11 AM – 6 PM, Broad Art Lab and Children's Art Activity Area at the East Lansing Art Festival.

[Advanced Molecular Imaging Course](#)

An advanced molecular imaging course targeted toward senior graduate students, postdoctoral researchers, and young faculty who are interested in advancing their knowledge to become leaders in the field. Individuals who have a fundamental understanding of biology, chemistry, and physics will get the most from this intensive course. Join us on the beaches of Holland, MI from July 24th – 27th 2019 at Hope College! Register [here](#).

[Targeting Metabesity 2019](#)

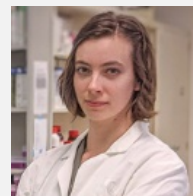
October 15 - 16, 2019, Washington, DC

Abstract submission for Targeting Metabesity 2019 is now open. The committee encourages submissions that are innovative and challenge current treatment paradigms. There is an early deadline (June 1, 2019, 5 p.m. EDT) and a standard deadline (August 1, 2019, at 5 p.m. EDT). For more information, visit metabesity2019.com

[BMB Picnics](#)

BMB monthly noon picnics will resume on May 23rd at the courtyard behind the Biochemistry building.

Noteworthy News



BMB/MPS doctoral student Emily Lanier was awarded a prestigious 2019 National Science Foundation Graduate Research Fellowship. Lanier is a dual major in Molecular Plant Science Program (MPS) and the Department of Biochemistry and Molecular Biology (BMB), where she works in the lab of scientist Bjoern Hamberger. She is pursuing a collaborative project between the labs of Dr. Hamberger and Dr. Michaela TerAvest, working to find new methods of producing plant-derived chemicals for pharmaceutical and industrial uses. [Read more here.](#)

SPARTANS WILL.

Recent Publications

For most publications from BMB labs during the past year, see [Recent Publications](#) on the BMB website.

Last RL. “Put on Your Sunscreen: The Birth of Arabidopsis Abiotic Stress Genetics.” *Plant Cell*. (2019) May 8;. doi: [10.1105/tpc.19.00341](https://doi.org/10.1105/tpc.19.00341)

Kim Y, Opron K, Burton ZF. “A tRNA- and Anticodon-Centric View of the Evolution of Aminoacyl-tRNA Synthetases, tRNAomes, and the Genetic Code.” *Life (Basel)*. (2019) May 4;9:(2). doi: [10.3390/life9020037](https://doi.org/10.3390/life9020037)

Howe GA. “Auspicious Beginnings for the Defense Hormone Jasmonate.” *Plant Cell*. (2019) May 2;. doi: [10.1105/tpc.19.00333](https://doi.org/10.1105/tpc.19.00333)

Oh S, Montgomery BL. “Mesophyll-specific phytochromes impact chlorophyll light-harvesting complexes (LHCs) and non-photochemical quenching.” *Plant Signal Behav*. (2019) Apr 30;1-10. doi: [10.1080/15592324.2019.1609857](https://doi.org/10.1080/15592324.2019.1609857)

Leong BJ, Lybrand DB, Lou YR, Fan P, Schillmiller AL, Last RL. “Evolution of metabolic novelty: A trichome-expressed invertase creates specialized metabolic diversity in wild tomato.” *Sci Adv*. (2019) Apr;5(4):eaaw3754. doi: [10.1126/sciadv.aaw3754](https://doi.org/10.1126/sciadv.aaw3754)